



Protects Concrete Where It Counts

SEAL HARD AUSTRALIA PTY LTD

SEAL HARD®

Concrete Sealer, Densifier, Dustproof, Chemical Hardener, Curing Aid.

Seal Hard Australia Pty Ltd
60 Centenary Place
LOGAN VILLAGE QLD 4207
Phone: (07) 5546 3660
Email: info@sealhard.com.au
Web: www.sealhard.com.au

PRODUCT DESCRIPTION

SEAL HARD is a proprietary, colourless, environmentally safe chemical solution that increases the wear surface strength of concrete floors subjected to pedestrian and vehicle traffic. SEAL HARD penetrates concrete surfaces to seal, dustproof, densify and harden them. SEAL HARD floors last longer, cost less to maintain, are safe to use, and are guaranteed to resist dusting for years after application.

Through a chemical-ion exchange process, SEAL HARD develops internal bonds which densify the concrete substrate into a hardened, chemically-cured, homogenous concrete mass that dustproofs, resists abrasion, and reduces oil and water penetration. This chemical-ion densifying process begins immediately upon treatment and continues through the initial six months following application, at which time the treatment becomes complete and permanent.

With its odourless, VOC free formula, SEAL HARD is environmentally safe to use. SEAL HARD is also safe to own. The deeply penetrating chemical action leaves no film and will not alter the natural non-slip texture of the concrete floor. Treated floors conform to ADA and OSHA requirements.

SEAL HARD treated floors provide a significant saving in maintenance costs over conventional acrylic, epoxy and urethane sealers. SEAL HARD will not yellow, discolour, chip, peel or show unsightly wear patterns with use. SEAL HARD treated floors resist tire marks. In fact, the more a SEAL HARD floor is used and as it matures, the better it looks and more durable it becomes.

SEAL HARD can be applied to freshly laid concrete once the trowelling process is completed. SEAL HARD will help the curing process but it is not deemed a curing agent. To meet industry standards, a resin curing compound can be applied after the SEAL HARD application and a drying time of 1hr or more has lapsed.

Basic Use: SEAL HARD is recommended for use in high performance areas subjected to forklift and tow motor traffic: warehouses, distribution centres, manufacturing plants, textile mills, bottling plants, coolers and freezers, food processing plants, canning factories, breweries, bakeries, meat and poultry processing plants, service stations, grocery stores, discount retail stores, hub transfer facilities.

SEAL HARD

Concrete Sealer, Densifier, Dustproof, Hardener, Curing Aid

TECH DATA

Other uses include concrete floors subjected to heavy pedestrian traffic, such as: civic centres, sports arenas, stadiums, hospitals, airports, museums, schools and grocery stores; parking decks, sewage treatment plants, dairies, fish processing plants, refineries and water treatment plants.

ESTIMATING

Container sizes: SEAL HARD is readily available in 20L and 208L (55-gallon) containers.

Typical Application Rate: 5m²/litre

TECHNICAL DATA

Applicable Standards:

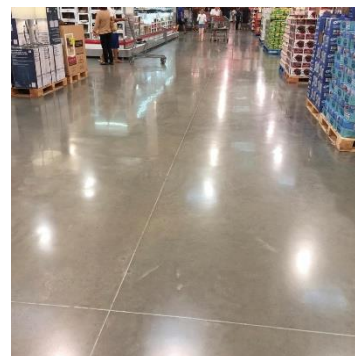
Green Spec listed
Green Star, Green Building Council of Australia Compliant
National Floor Safety Institute – High Traction
Recommended for ACI 302, Class 1 through 6 concrete floors, and Class 9 super flat floors
USDA, ADA, OSHA approved
Canadian Health Department – Food Facility Safe

Typical Properties:

Type.....Proprietary blend
Flash Point.....None
Abrasion Resistance, ASTM C 779
Increased wear resistance.....+225%
Skid resistance, ASTM E 303.....Good
NFSI 101A....."High traction"
SCOF – Wet or Dry.....>0.6
Water Absorption, ASTM C 642
% Reduction, average.....81%
Water Vapour Transmission Rate, ASTM E 96
Grains/Hour/Ft²5.27
Perm.....7.36
Surface Breathable.....Yes
Odour:.....None
Colour:.....Clear
UV Stability:.....Excellent, no discolouring
VOC (gms/Litre):.....0.0

INSTALLATION:

Costco Warehouse floor





Protects Concrete Where It Counts

SEAL HARD AUSTRALIA PTY LTD

SEAL HARD

Concrete Sealer, Densifier, Dustproof,er,

Hardener, Curing Aid

TECH DATA

Application:

Apply directly from container one undiluted, saturating coat. Aggressively scrub into the surface with a mechanical scrubber or bristle broom. This scrubbing will help achieve maximum penetration and will begin to polish hard-trowelled floors. Do not use metallic brushes.

Keep surfaces wet with **SEAL HARD** for a minimum of 30 minutes and continue scrubbing and/or brooming. When product begins to thicken, sprinkle with water and continue scrubbing for another 10-15 minutes. At this time, thoroughly flush excess **SEAL HARD** with clean water and remove all solution from the floor by squeegee and wet vacuum. This diluted residue solution is nontoxic and can be emptied into a sanitary sewer. **Warning:** Failure to thoroughly wash and remove all excess material from floor surfaces may result in unsightly white residue stains. Where extra protection is needed or desired, a second application can be installed approximately 2-4 hours following the first coat, or anytime thereafter. Floors are immediately available for traffic after removal of the rinse residue.

Old (Existing) Concrete Surface Preparation: Surfaces must be clean and structurally sound. Remove all residue, oil, membrane curing compounds, sealers, contaminants and laitance in order to ensure maximum penetration and chemical reaction. Problems may occur with acid etching and mechanical abrasion. Repair all holes, cracks and deteriorated areas.

Application to Old (Existing) Concrete: Follow the same application procedures as found under *New Concrete*. Depending on surface porosity, application rate may range from 2.5-5.0m²/L. Additional costs may be required in some situations due to porosity or extreme dusting.

Approved Applicators: For best results Seal Hard Australia have trained and qualified approved applicators and recommends their use. Additional warranties are available if an approved installer is used. Contact Seal Hard Australia for details and further warranty requirements.

FOR BEST RESULTS:

- Install by a Seal Hard Australia approved applicator.
- Apply when surface temperatures are above 5°C.
- **SEAL HARD** is a colourless solution that will not alter the appearance of the concrete surfaces. It will, therefore, not hide serious staining or excessive wear. For porous, worn or stained concrete surfaces, contact Seal Hard Australia for special assistance.
- In hot weather pre-dampen concrete surfaces with water to cool. After standing water dissipates, apply **SEAL HARD**.
- Immediately wash off over-spray from glass, aluminium or highly polished surfaces with water to avoid etching of surfaces. Flush equipment with water to clean. Do not allow **SEAL HARD** to dry before flushing excess from surfaces.
- On new concrete placements: we recommend finishing the concrete to a hard trowel finish per ACI-302.IR-8.6.1.

PRECAUTIONS

Avoid contact with skin, eyes and clothing. Wash thoroughly after handling. Do not take internally. Wear skin and eye protection. Please refer to product Material Safety Data Sheet (MSDS) before using. Dispose of diluted rinse water only into a sanitary sewer. Conform to local regulations for disposal.

STORAGE/SHELF LIFE

SEAL HARD containers are to be stored in a clean, dry area between 5°C - 40°C. Shelf life of **SEAL HARD** in unopened containers is a minimum of two years if properly stored. Do not freeze.

WEBSITE

Visit www.sealhard.com.au - **SEAL HARD's** convenient website offers instant access to Tech Data Sheets, Material Safety Data Sheets, product updates and other useful information.

SHORT SPEC

033000: Concrete densifier, sealer, hardener. All exposed concrete surfaces to be treated to harden, seal and densify exposed concrete. Applied by an Approved Applicator – 20 year warranty. "**SEAL HARD**" by Seal Hard Australia.

LIMITED WARRANTY

Requires an approved applicator. Seal Hard Australia guarantees that, after an initial cure period of 90 days, properly prepared and treated sound concrete surfaces are chemically hardened and densified for a minimum of twenty (20) years. Should **SEAL HARD** that was installed by an Approved Applicator fail to perform as specified, Seal Hard Australia will supply sufficient **SEAL HARD** to re-treat the failed area.

This product is warranted to be free of defects in material and workmanship, and conform to Seal Hard Australia's quality control standards. All recommendations, statements and technical data herein are based on tests we believe to be reliable and correct, but accuracy and completeness of said tests are not guaranteed and are not to be construed as a warranty or guarantee of any kind, expressed or implied including but not limited to, an implied warranty of merchantability or an implied warranty of fitness for a particular purpose. Satisfactory results depend upon many factors beyond Seal Hard Australia's control. User shall rely on his or her own information and tests to determine suitability of the product for the intended use and user assumes all risk, loss, damage, expense and liability resulting from his or her direct use, indirect use or consequential to their use of the product. Seal Hard Australia shall not be liable to the buyer or any third person for any injury, loss or damage directly or indirectly resulting from: use or inability to use the product. Seal Hard Australia's sole responsibility shall be to replace that portion of the product which proves to be defective. Any warranty claim must be made within six (6) months from the date of the claimed breach. This limited warranty applies only if the product was properly installed and used according to all instructions and was properly stored prior to use.

For professional use only.

SEAL HARD® is a registered trademark of Seal Hard Australia Pty Ltd.